



Grant Proposal to Amatererra for
an Environmental Teaching
Book and Marine Debris
Beach Clean-up

August 2013

INTRODUCTION & SEA LIFE SCULPTURES

Programs

The Washed Ashore Exhibit uses giant sea life sculptures made entirely of marine debris collected from beaches to graphically illustrate the tragedy of pollution in our oceans.

Thousands of volunteers have worked together under the guidance of Angela Haseltine Pozzi to create the powerful art pieces.

These sculptures are combined with educational signage to teach children and adults how to help save our seas.



Angela Pozzi and her fish made with marine debris displayed recently at our award-winning AZA booth in Phoenix.

Intriguing, frightening and irresistibly memorable sculptures made from marine debris.



"Tula" the Giant Sea Turtle

**Sculptures are up to 10 feet tall
and eight to 14 feet long.**



"Lidia" the Seal

They surprise and enthrall children and adults alike.



Passing through hanging "Whale Bone Rib Cage" made from white plastic debris.

**They have brought laughter to children
and tears to adults.**



Hanging "Giant White and Red Jelly" Interactive Sculpture

EXHIBIT PIECES AVAILABLE

Giant Fish (aka Henry)

Length 15ft, Width 6ft, Height 10ft



Giant White and Red Jelly

Height 11ft, Diameter 7ft

Yellow Jelly

Height 10ft, Diameter 6ft

Whale Bone Rib Cage
Length 23ft, Width 8ft, Height 10ft

Flip Flop Fish
Length 8ft, Width 6ft



Fish Bite Fish
Length 4ft, Width 3ft



Fish Bites-
Several types of fish regularly eat pieces of plastic for food. Plastics move into the food chain as fish eat the humans and marine life eat the fish. As plastic is through oceans, they act as sponges for waterborne toxins like PCBs, DDT and other pesticides. These toxins can be times more concentrated in the bits of plastic than surrounding water.
These plastic pieces, found with extensive blue-marlin, show evidence of the problem.

Giant Sea Turtle (Tula)
Length 10ft, Width 6ft, Height 2ft

Giant Squid with net
Length 8ft, Width 3ft

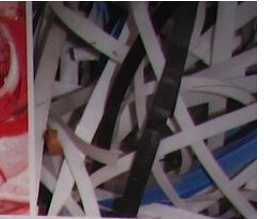


Photo mosaic panel – On the Beach
Length 5ft, Width 5ft

Photo mosaic panel – Art Supplies
Length 5ft, Width 5ft



Plastic caps are made from a plastic that cannot be easily recycled.



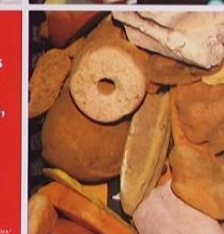
Americans use approximately 1 billion disposable shopping bags, creating 300,000 tons of landfill waste each year.



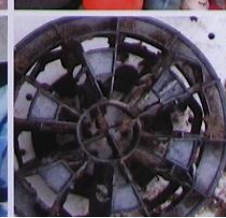
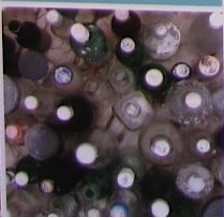
80% of marine debris comes from land – it's our garbage!



Every year, Americans throw away enough paper and plastic cups, forks and spoons to circle the equator 300 times.



38,000 miles of ribbon are thrown away each year: enough to tie a bow around the Earth.



The average American produces about 4.4 lbs. of garbage a day, or a total of 29 lbs. per week and 1,600 lbs. a year.



Cnidarian 1
Height 4ft, Diameter 3ft



Cnidarian 2
Height 4ft, Diameter 3ft

Cnidarian 3
Height 4ft, Diameter 3ft

Lidia the Seal
Length 12ft, Width 5ft, Height 9ft

OCEAN ENVIRONMENTS

Ocean Gyre

Length 12ft, Width 7ft, Height 9ft



Styrofoam Bleached Coral Reef

Flexible measurements based on installation space



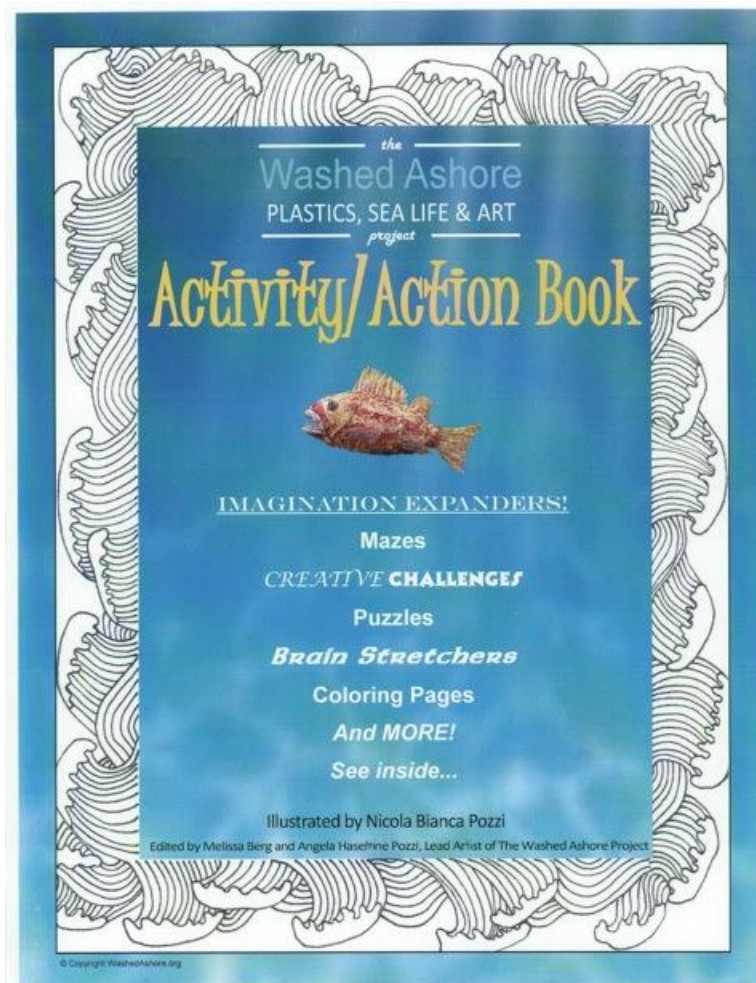
GRANT REQUEST TO AMATERRA

WE ARE REQUESTING \$1,000 IN FUNDS TO:

- A) HELP PRODUCE AN EDUCATIONAL ACTIVITY/ACTION BOOK (\$700)**

- B) RENT VEHICLES TO RETIEVE DEBRIS FROM OREGON COAST BEACHES (\$300)**

Activity/Action Book



Ages 8 and up, Intermediate guide, up to 35 pages

Coloring sheets, mazes and puzzles with educational and take action information on each page featuring:

“Did You Know?” - Each page tells children new facts about the animals or issue raised.

“Every Action Counts” - Each page gives concrete examples of what they can do to help.

Imagination Expanders – entice children to think outside the box and draw or write solutions.

Creative Challenges - encourage children to think like an artist and do something unexpected.

Coloring Sheets – connect children with the images of the animals, their environment and the threats of plastic pollution.

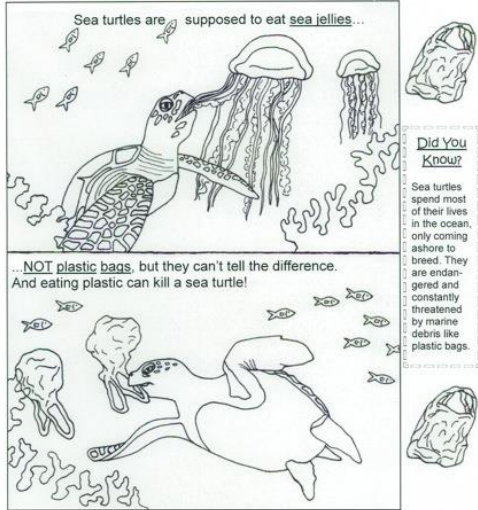
Mazes and Puzzles – offer sea life facts in a fun way.

Word Games – build marine vocabulary.

Content includes realistic and beautiful drawings of marine animals highlighting:

Watershed Awareness - storm drains to rivers to lakes and oceans
Endangered Animals of the Ocean
Ingestion and Entanglement Issues
Ecological Facts
Plastic Pollution Information
Everyday action to make things better
How to Rethink, Reduce, Reuse, Recycle, Reinvent and Refuse
Creative Problem-Solving Exercises
Writing Prompts
Inquiry-Based Learning
Interview questions for community and family members

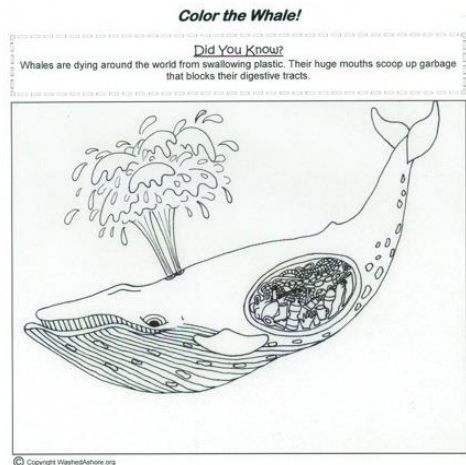
Activity/Action Book Pages



How Can I Help? Write five ways YOU can make a difference

1. _____
2. _____
3. _____
4. _____
5. _____

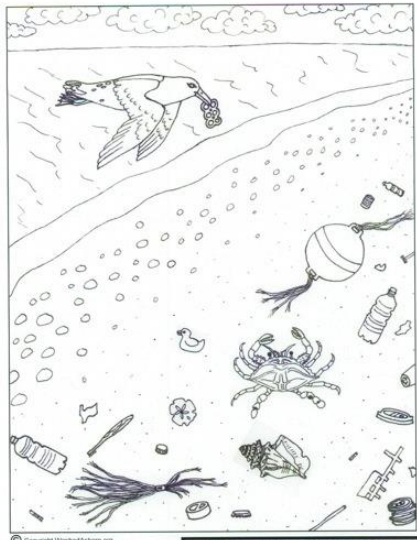
EVERY ACTION COUNTS!
Reducing your plastic bag use can help sea turtles worldwide.



Also color in the belly of the whale. Colorful plastics can be harmful to sea life.

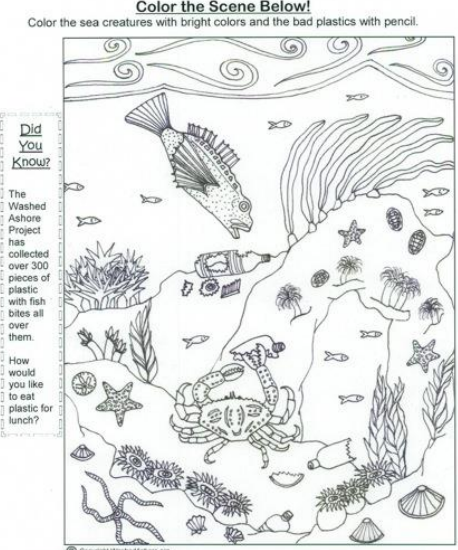
EVERY ACTION COUNTS!

- Pack a waste-free picnic with re-usable forks, plates, cups and containers.
- Take your picnic to the beach and bring back more plastic than you came with.



Did You Know?
Animals and birds can be strangled by six pack rings that get thrown out.

EVERY ACTION COUNTS!
Whenever possible, don't buy six-packs that have plastic holders. If you do, please cut them up before disposing so animals don't get entangled.



EVERY ACTION COUNTS!
Pack a healthy lunch for everyone. Eliminate single use plastics by using refillable containers and thermoses for food.

RECENT VENUES

(Web Pages & Video Links where available)

***The Marine Mammal Center
Sausalito, California***

[Portland Community College](#)

Newport Visual Arts Center, Oregon

Oregon Coast Aquarium

America's Cup Healthy Ocean Exhibit

The Living Coast Discovery Center

[Harbortown Events Center Bandon, Oregon](#)